

August 2010



WEBSITE

Our primary method of communication is our website
www.ourladyoftheangels.org.
Please try to check it on a regular basis.

FAMILY FOLDERS

There is some information that will be provided in hard copies such as the school calendar and the emergency card. Your family folder may be picked up at the building that your oldest child attends. They will be available the weekend of August 14th.

THANK YOU

Our Annual Appeal goal of \$35,000 was reached and we are very grateful to all who supported us. In these difficult economic times we understand the financial struggle which makes this accomplishment even more wonderful. God Bless you for all that you do to provide a Catholic education for the students of Our Lady of the Angels.

COLD WEATHER

There are times during the winter that our girls wear long pants under their skirts to stay warm when they are outside. If your daughter finds this necessary I ask that they wear navy blue or gray. These colors will look more appropriate with the plaid skirt or jumper.

FOCUS

Our families received \$4000 this year from the Diocesan scholarship fund (FOCUS). We are grateful to the Diocese for all that they do for us.

NEUMANN SCHOLARSHIP

This year Our Lady of the Angels School families received \$124,235 in tuition assistance. This is due to the generosity of many businesses that make use of the Educational Improvement Tax Credit. Pennsylvania businesses donate money and receive tax credit from the state. The businesses have the option of designating particular schools. Our Lady of the Angels has been blessed by the generosity of:

An Anonymous Donor
Conestoga Title Insurance Co
Imperial Eagle Products, Inc
Lancaster Starter and Alternator
Ranck's Plumbing and Heating
Sahd Salvage

BRIDGE FOUNDATION

Our families have also received \$7500 in tuition assistance from the Bridge Foundation. We are truly blessed!





BACK TO SCHOOL NIGHT

The dates for the Back to School Nights are listed on your family calendar. This is an opportunity to meet your child/ren's teachers and get an insight into the procedures and expectations for the 2010-2011 school year. The program will begin at 7PM in the respective building cafeteria to go over the schedule for the evening.

TUITION

Your financial commitment to Our Lady of the Angels School is very important. According to our 2010-2011 school budget we estimate the cost of educating a student at Our Lady of the Angels as \$4126. Your tuition is 61% of this amount for one child, 49% for two children and 42% for three or more. The remainder is from Parish Subsidy, Annual Appeal, Home and School Fundraisers and Gifts and Bequests. The Neumann Scholarship has provided \$124,235 in financial aid for 2010-2011 to our families. Both Pastors have made it very clear that no child will be denied a Catholic education if there is a genuine financial hardship.

#

#

SEPARATE CHECKS

There are times during the year when checks are being sent to the office for a multitude of reasons (lunch, tuition, gym uniforms, stationery, scrip, etc.). Please never send cash to school with your child/ren. When sending checks please label the purpose of the check and place it in the zippered Our Lady of the Angels bank pouch labeled with your family name.

OUR LADY OF THE ANGELS FACULTY AND STAFF

K4	Mrs. McGrath
K5	Mrs. Zeamer
1 st	Mrs. Williams
2 nd	Mrs. Detz
3 rd	Miss Buchheit
4 th	Mrs. Benko
5 th	Mrs. Collins
6 th	Mrs. O'Donnell
7 th	Mrs. Barninger
8 th	Mrs. Fischer
Library/ Art	Mrs. Spicer
Computer	Mrs. Carey
Gym	Mrs. Chmiel
Music	Mrs. Grochowski
Religion	Sr. Anna
Angel Care	Mrs. Katalinas
Secretary	Mrs. Diffenderfer (EB)
Administrative Assistant	Mrs. Crumbling (PB)



DRESS DOWN DAYS (DDD)

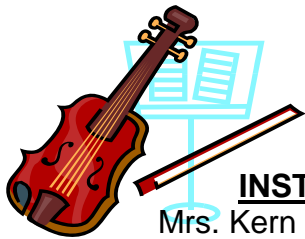
DRESS CODE

On triple "D" days students may only wear sneakers. They may wear t-shirts or sweatshirts as long as the wording or pictures are appropriate to be worn by a student attending a Catholic School.

SMOKE FREE

Our Lady of the Angels is a smoke free school property. There is no smoking permitted on school property during the school day, at extracurricular activities or school functions. We are role models for our children.





INSTRUMENTAL LESSONS

Mrs. Kern is our instrumental instructor. There will be information provided to students in grade 4 through 8 who are interested in playing an instrument. This year she will also make violin lessons available to 3rd graders.

HANDBOOK

In an effort to keep the handbook up to date it is included in the front section of your child's homework journal and it is also on our website

www.ourladyoftheangels.org.

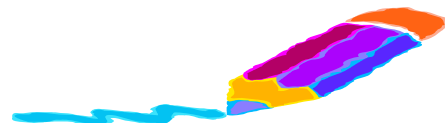
Each child in first through eighth grade will be given a journal on the first day of school. We require that all students have and use their homework journal. The journal should be taken home every night and then brought back to school the next day. There will be a form in your child/ren's journal requesting your signature after you and your child have reviewed the handbook.

MONTHLY TUITION STATEMENT

Tuition statements will be emailed on a monthly basis. We ask that you remain current with your financial commitment. Please review your statement and contact the office immediately if you have any questions.

FRIDAY MASSES

It is important that you check your calendars for the location of the Friday Mass. Students are dropped off at the site where the Mass is celebrated. Only under extenuating circumstances do we change the location.



EMERGENCY FORMS

Of all the forms you will be completing this year this is the **most important**. Please make any changes on the form that is in your family folder using the red pen. Also throughout the year as **information changes** please send the new information in writing or email the school office. These forms are necessary for the welfare of your child. **If this form is not received and updated the school will not be held responsible for decisions made on your child's behalf.**

WELCOME

We welcome the following families to Our Lady of the Angels School Family:

- John & Jennifer Detz
- Leticia Garcia
- Carl & Sara Greth
- William & Mary Anne Hinkson
- Kevin & Kristine Kraft
- Aaron & Angela Mackley
- Reynaldo & Mary Jo Miranda
- Scott & Freedom Mimnall
- Craig & Catherine Moon
- Bruce & Jane Murray
- Don & Christine Sneeringer
- John & Stephanie Spencer
- Robert & Joanna Spicer



MEDICATION

Students are not permitted to carry medicine to and from school when riding a bus or walking. Parents are to bring the medication along with the appropriate form to school and if necessary pick it up. The necessary forms are on the website. This pertains to **ALL** medication not just prescription.



WE SAVE...

Listed below are the things that Our Lady of the Angels School families can save to benefit the students and teachers:

1. **Campbell Labels**
 2. **General Foods Box Tops**
Supplements the cost of field trips and retreats
 3. **Ink Cartridges for Printers**
Consumable supplies for Technology
 4. **Discarded Cell Phones**
Technology fund
 5. **Turkey Hill Moo Caps**
 6. **Capri Drink pouches**
- Enclosed in the family folder is information on all of these items. Please take a little extra time and help your school.

MIDDLE STATES GOALS

Since our Middle States Certification two committees have been working on the following goals:

Goal Statement #1: By the year 2012, the Eighth Grade Students of Our Lady of the Angels will increase in ranking from 51% to 70% of the National Percentile Ranking in Mathematics Problem Solving as determined by the Iowa Test of Basic Skills (ITBS).

Goal Statement #2: To increase the percentage of students who achieve a Physical Fitness Award from 30% to 50% by June 2012.

WEAPONS

Nothing resembling a weapon may be brought to school. That includes knives, guns, slingshots, brass knuckles, screwdrivers, etc. whether they are real or toys.

CHANGING MODES OF TRANSPORTATION

Please make every effort to have transportation plans made prior to your child's arrival at school. If your child/ren will be changing how they go home please put it in writing or email it to your child's teacher. There may be times when you have to call school and leave a message but we ask that this not become a practice.

If there is nothing in writing and no phone call, the child will be sent home using their regular mode of transportation. This will be the practice even if the child says they are to do something different. You are the parent and we will only follow your instructions.

Our Lady of the Angels School does not have the authority to give permission for students to ride a bus if they do not live in that school district. I have shared this information with the districts that bus our children.

BUSING

Students are not permitted to ride buses if they do not reside in that particular school district. This is for obvious safety and legal reasons. A note from a parent is not acceptable. If a child is NOT on the bus driver's roster he or she is NOT permitted to ride the bus.



SCHOOL HOURS

Students may enter their classrooms at 7:55. Our day begins with prayer at 8:05. With the exception of students that ride buses students are not to arrive before 7:55 unless there is a note on file. Dismissal for grades 1 – 8 is at 2:45. The Primary Building is dismissed from the Union Street door and car riders are dismissed first. At the Elementary Building buses are called first.



FIELD TRIPS

Field trips are for educational or spiritual purposes. There are no class trips. Parents may be asked to be chaperones from time to time. Chaperones must be on the **approved volunteer list** and are responsible for the group of students assigned to them, which may or may not include their child. We are grateful to our volunteers. Chaperones have a serious responsibility.

SCHOOL YEAR VACATIONS

Trips during the school year have been on the rise. An excuse form is to be submitted prior to the trip. Please do not request work prior to the trip. Teachers will keep track of what your child has missed and give it to them when they return to school. Understand that it is the child's responsibility to make up the work, projects and tests.

SCHOOL CHOIRS

Mrs. Grochowski, our music instructor provides opportunities for students in grades 2 through 8 to participate in this program. Students in grades 2 and 3 practice on Tuesday morning before school and students in grades 4 through 8 have rehearsal on Friday afternoons at 2PM. This is the Concert Choir and they are our music ambassadors.

ACCEPTABLE USE GUIDELINES

Students and parents are required to sign an Acceptable Use Policy before the students are permitted access to the Internet at school. The policy also refers to inappropriate use of the Internet at home. Please read the policy with or for your child/ren so that they understand the consequences if this educational tool is misused.



FEDERAL LUNCH PROGRAM

Our Lady of the Angels participates in the Federal Lunch Program. This program provides eligible families with free or reduced lunches. It costs the school nothing. Please take advantage of this program and complete the application if you feel you may be eligible. **All information is confidential.** If your financial circumstances change during the school year please contact the office or complete the form. If you were eligible for the 2009-2010 school year you will receive these benefits until September 10th. **YOU MUST COMPLETE A NEW FORM EACH YEAR.**



TRAFFIC

I ask that you follow the directions on picking up and dropping off your student/s and share them with anyone who may be sharing this responsibility with you. Over the years this has become a major concern because of those, who for one reason or another, decide to do things “their way”. As a school family our goal is to work together and **respect** each other



SCHOOL DELAYS AND CANCELLATIONS

Please note that this does not only apply to snow days. There may be other times when delays, cancellations or early dismissals may be necessary. This information will be broadcasted on WARM 103 and WGAL. **There is a modified schedule for K4 on these days.** If your child rides a public school bus you are to follow their delays and dismissals. As a parent I know that when these things happen it causes many concerns. The best thing to do is to have a plan in place for these events and inform your child of the plan. **We ask that you don't call the school because that ties up the phone lines. If school is dismissed early all planned evening activities will be cancelled.**

WELCOME

We would like to extend a warm welcome to the newest member of Our Lady of the Angels staff – Barb Katalinas. Mrs. Katalinas is our new Angel Care director.

TARDINESS

We implemented a procedure that if a child is more than 15 minutes late in a trimester they will make that time up after school. For some this worked but for others the tardiness continued. ***In fairness to the members of our Learning Community who are on time and have begun work we ask that parents make every effort to have their children at school by 8AM. School begins at 8:05.***

DISCIPLINE RECORDS

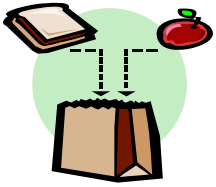
With a change in the state law, student disciplinary records must be sent to a new school, upon the request of the school, for all students who transfer to another school. This law became effective July 1, 2008.

The law notes that the school may continue to hold any academic records when there are outstanding financial obligations.

UNIFORMS

Students are to wear their school uniforms the first day of school. If new gym uniforms have been ordered, we ask that the students **wear dark shorts and a white tee shirt until the new ones arrive. We do not keep a stock of gym uniforms because of the cost involved.** The uniforms are ordered in September and December. There are sample sizes available at the school offices and they will also be made available at the back to school night. You may contact Rebecca Haas at 426-2843 or Beccahaas@yahoo.com for used uniforms.





LUNCH MENUS

Each month in the Family E-Folder there is a menu for your children. On the menu you are to circle one or the following:

1. if your child wants a **sandwich**
2. is **packing**
3. is **packing buying milk** (\$.35).

If your child is eating the entree you do not need to circle anything for that day. The menus are due by the date indicated on the menu. **If it is not received by the date indicated the cafeteria will serve your child the entrée for the month.** We are being fiscally responsible and need the lunch count to order supplies. If your child will be packing all year you can simply write a note to that effect and you will not need to complete a menu. Also if your child will be eating the entrée all year you can simply write a note and you will not need to complete a menu. I appreciate your cooperation.

THE PRINCIPAL'S BOOK

In each office there is a book that is referred to as the "Principal's Book". When children are sent to the office they sign this book. Each situation will be evaluated on its own merits and consequences will be determined. Also parents will receive a form requiring their signature, informing them their child was sent to the office to sign the book and why. If the form is not returned, parents will be contacted by phone. This form may also be emailed to parents.

SCHOOL CONCERNS

It is very important that there be complete unity in authority between the teacher and parent. It is also important to withhold judgment on what appears to be a grievance until you get all the facts.

1. Get your facts from the proper person.
2. Classroom teachers appreciate being contacted first when a problem becomes known.
3. Discuss your problem with the proper person. In most cases, the concern will be resolved with little difficulty. This act of courtesy will be greatly appreciated.
4. Should the above steps leave the concern unresolved, a conference with the principal may be requested.

EXCUSE NOTES

For your convenience we have placed an excuse note form on the website www.ourladyoftheangels.org. Notes are to be sent with your child when they return to school after an absence. The form is to be used for late arrivals, early dismissals, appointments and planned absences. The form does indicate the procedure that will be followed when a form is not returned. You may also email the excuse note to us. Please include all necessary information in the email.



OUR LADY OF THE ANGELS SCHOOL SUPPORT GROUPS

Dedicated parents and volunteers are what have made Our Lady of the Angels School successful. If we want to continue this success we need your help. Become a positive influence by volunteering your time and talent.

Our Lady of the Angels Home and School Association meets every other month. The dates are on your calendar. All parents are encouraged to attend. Babysitting is provided for younger children. The officers are:

President: Paula Diffenderfer
Vice President: Tina Sumpman
Secretary: Becky Haug
Treasurer: Julie Brommer

Our Lady of the Angels School Board meets every other month and is consultative in nature. The members of the school board are:

Elected:

George Seibert
Hal Snyder
Nick Reich

Appointed:

Heather Zink – Holy Trinity
Scott Haberstroh – St. Peter

The pastors, principal and representatives of the Home and School and Athletic Association are also members of the Board.



Our Lady of the Angels School Development Committee meets on a monthly basis. The purpose of the committee is to establish financial security, publicity and public relations. This small group of people oversees the Annual Appeal, publishes the Heavenly News, operates the Food Club and Scrip Program, Baptism Program and

conducts the Hall of Fame reception. We are always looking for friends to become involved in one or more of these activities, some require time once a year, others quarterly, and others monthly. Please consider becoming involved.

SECURITY

Our goal is to provide a safe learning environment for your children. All doors are locked at 8:05 and are to remain locked during the day. Students have been instructed not to open the door for anyone. Parents are buzzed into the building and then come to the office to sign the visitors' book. When leaving the building visitors are asked to sign out.

#

****IMPORTANT****

We have a student that has had a liver transplant and we are very happy to have her with us. I would like to share some information with you. I will quote from the letter from the University of Pittsburgh Transplant Institute. "It would be imperative to notify the child's parents of **chicken pox exposure or outbreaks.** An exposure is considered to be one hour face to face contact with a child that has a confirmed case of chicken pox. The child with the liver transplant would have up to 72 hours to be sent to a local emergency room to initiate treatment to help protect the transplant graft." So **please** keep the **office informed** of any contact with a child that has the **chicken pox**. Thank you in advance for your concern and help.#

